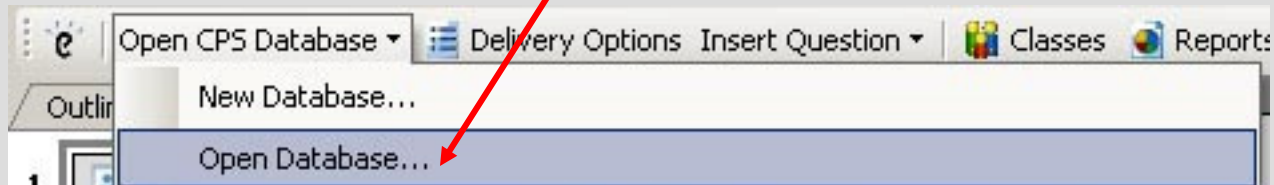


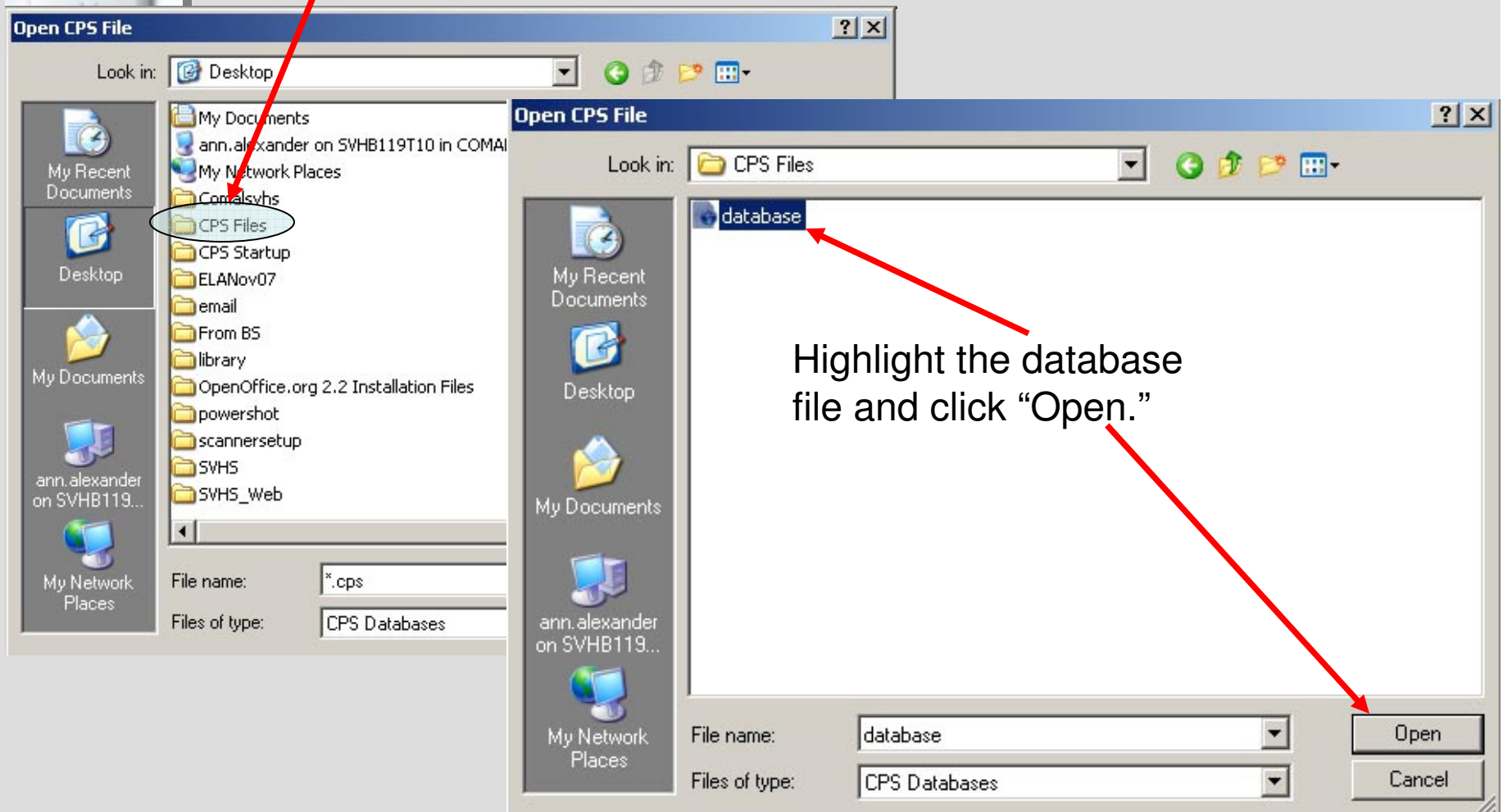


## Engaging a CPS PowerPoint presentation

Click the “Open CPS Database” button on the CPS toolbar and choose “Open Database.”

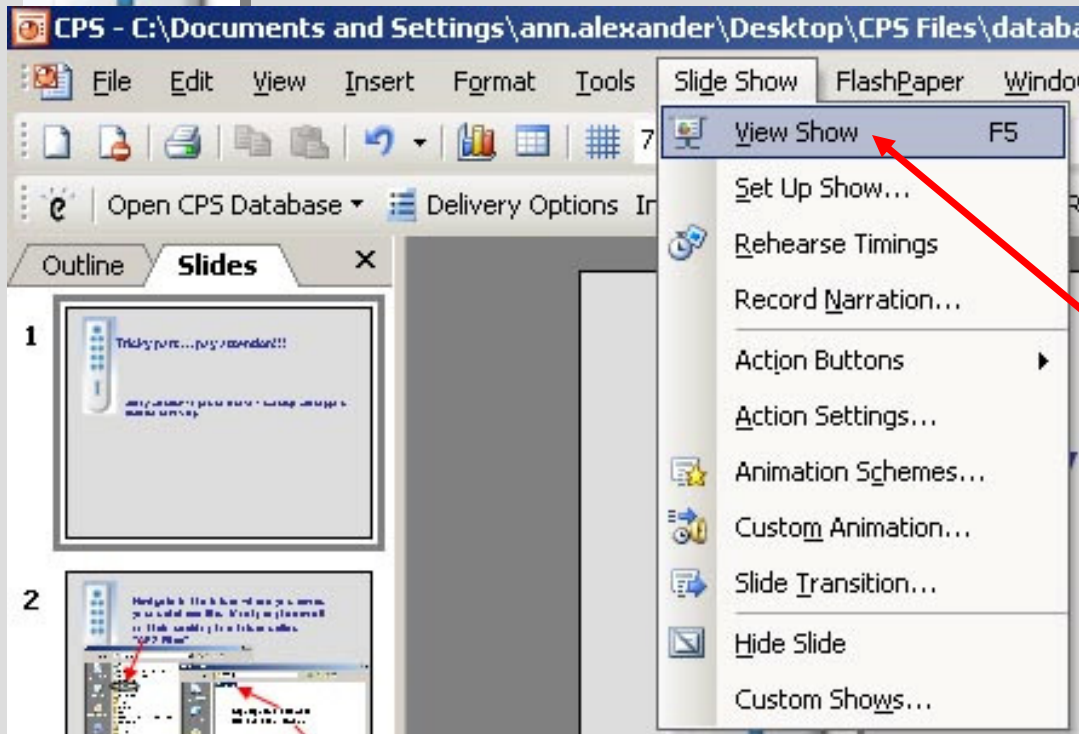


Navigate to the folder where you saved your database file. Most people save it on their desktop in a folder called "CPS Files"





**Tricky part ... pay attention!!!**



**After you click “Open Database,” nothing will happen until the next step.**

**Click “Slideshow” and “View Show”**



**Now you will see the Session Options box**

**There are a couple of options you can choose. Set up your session the way you want it and then click "OK."**

**Session Options**

Include Session in Gradebook

Export to Question Grid     Anonymous Mode

Automatically Upload Session Upon Completion

Session Title  
Using PowerPoint Presentations in Class

Session Category    Max Points  
Class Participation    100

Class Options  
Class  
spurs    Create...

Create Attendance from this Assessment  
 Include Attendance in Gradebook    Max Points  
 Automatically Upload Attendance    5

OK    Cancel



Once you get to a slide that has a question, the bottom CPS bar will change

- A. Google
- B. Study Island
- C. Windows
- D. Huh?

Click "Engage" and then click "Start" on the next tool bar.





- A. Google
- B. Study Island
- C. Windows
- D. Huh?

After clicking “Start,” students can respond. When they have finished, click on “End” and you can look at the results for the question.



# The Mac you were assigned uses both Leopard and what OS?

After clicking “End,” this screen gives general response information. Clicking the Chart icon will give more visual information.

- A. Google
- B. Study Island
- C. Windows
- D. Huh?



4

2

3

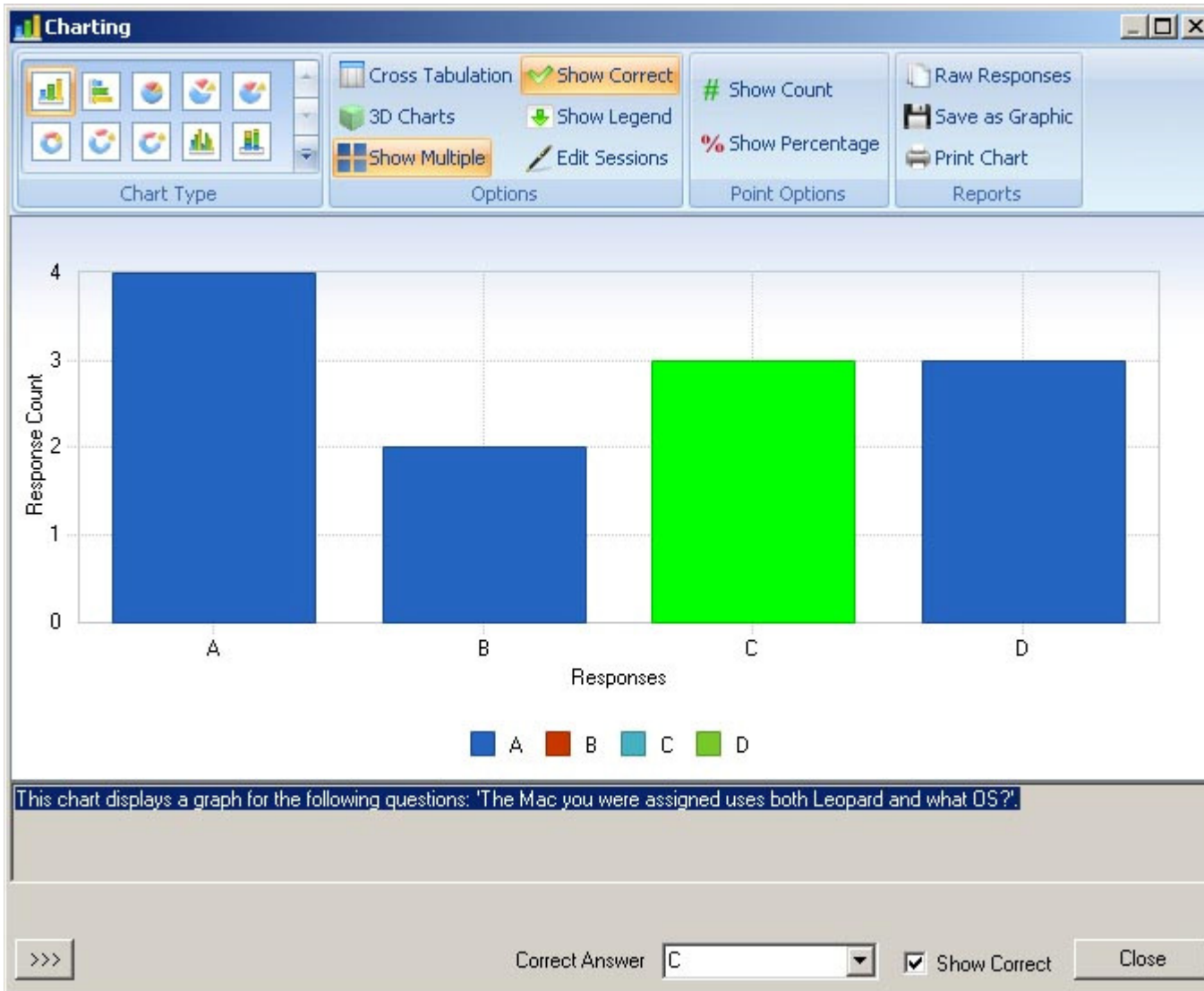
3

Start End

Verbal Cumulative % Correct Question % Correct

Chalkboard 25 25

Navigation icons: back, forward, home, search, settings, help, end.



You can change the “Chart Type” on the left, look at other Options, Point Options, and Reports from the Chart screen. Viewing charts after responses is one way to see if you need to spontaneously reteach.

Try it out on the next slide...



George Jetson's boss's name is:

- A. Mr. Slate
- B. Mr. Big
- C. Mr. Spaceley
- D. Your highness





This is just one option you have with CPS PowerPoint. You can also engage verbal questions and questions you spontaneously write out using your Interwrite or Chalkboard just by clicking on those options during your presentation.

When you have finished all sessions, click

the  on the toolbar and then choose

“Close.” You will be asked if you want to end the session and just choose “Yes.”